



USB2.0 CMOS HDR camera
Module **DJU-H23**
Product Specification



SPECIFICATION

| | |
|----------------------------------|---|
| Image Sensor | 1/2.7" CMOS AR0230HDR |
| Pixel Size | 3um(H) x 3um(V) |
| Resolution | 2.0 Megapixel 1920H x 1080V |
| Output Format | MJPEG, YUV2 |
| FOV | 90 degree, more view angle for option by requirement |
| Lens | EFL: 3.6mm F/NO: 2.0mm |
| Focus type | Fixed focus |
| Shutter type | Electronic Rolling shutter |
| Audio Input | No |
| Max Dynamic range | Up to 105dB |
| Output & Power Supply | USB2.0 |
| Power Socket | 4P 1.5mm socket |
| Supported OS | Win XP/Vista/Win7/Win8/Win10 MAC OS X El Capitan 10.11.4, Linux /Android, Wince with UVC |

Controllable Features **Brightness, Contrast, Saturation, Hue, Sharpness, Gamma, White balance, Backlight Contrast, Exposure**

Cable length **Default 1m USB cable**

Module Size **32*32 or 38*38 mm**

WORKING CONDITION

Power Consumption **USB DC +5V Supply**

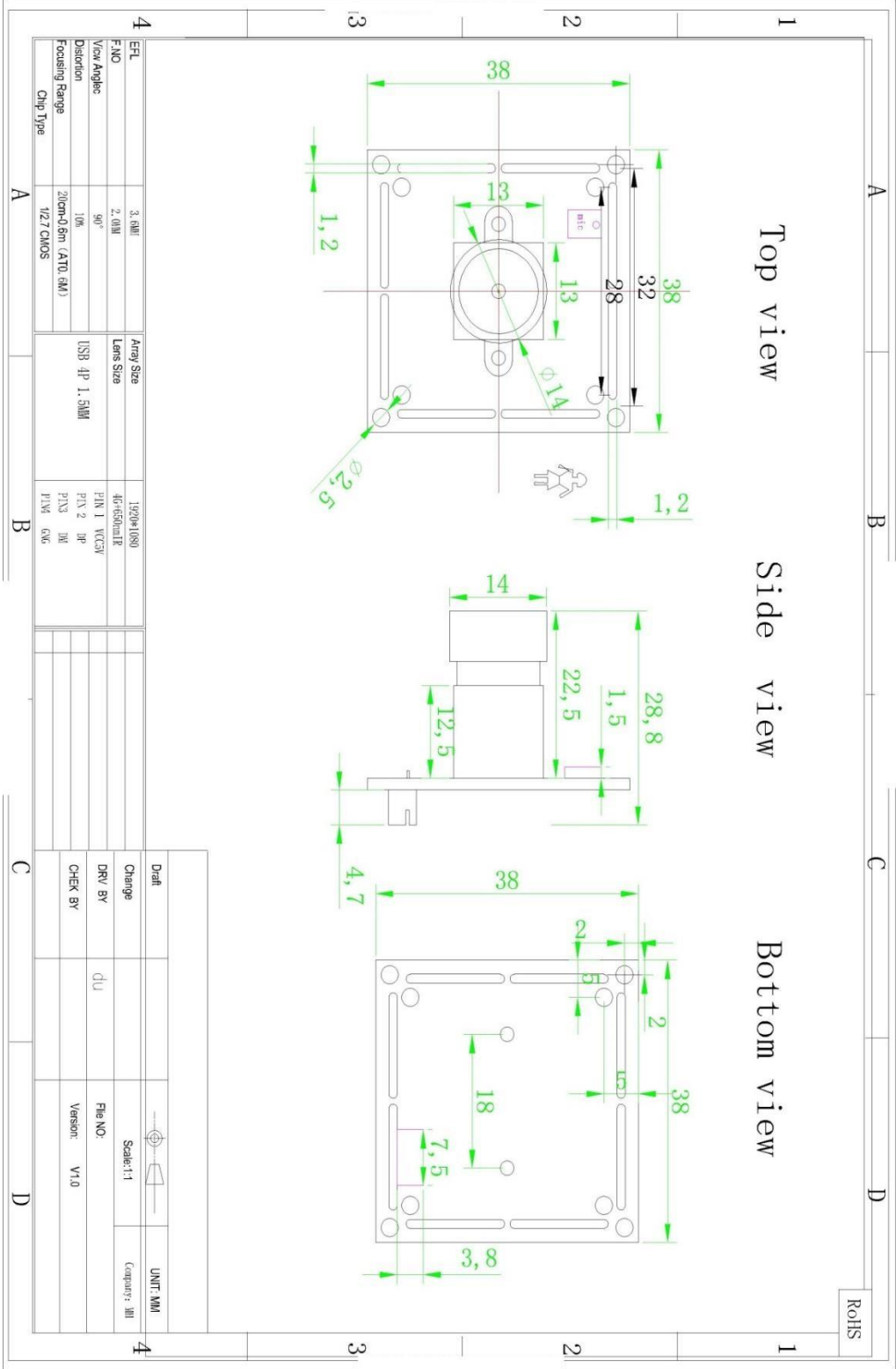
Operating Temperature **-20° ~ +70°**

Storage Temperature **-40° ~ +85°**

Humidity **80 ~85%**

| FORMAT | RESOLUTION | FRAME RATE |
|--------|-------------------|------------|
| | | USB2.0 |
| MJPEG | 1920x1080 (1080P) | 30fps |
| | 1280X720 (720P) | 30fps |
| | 800x600 (WVGA) | 30fps |
| | 640X480 (VGA) | 30fps |
| YUY2 | 1920x1080 (1080P) | 5fps |
| | 1280X720 (720P) | 10fps |
| | 800x600 (WVGA) | 20fps |
| | 640X480 (VGA) | 30fps |

PRODUCT DIMENSION



| | | | |
|----------------|---------------------|------------|-----------|
| EFL | 3.6MM | Array Size | 1920*1080 |
| FNO | 2.0MM | Lens Size | 40-60mmLR |
| View Angles | 90° | USB 4P | 1.5MM |
| Distortion | 10% | | |
| Focusing Range | 20cm-0.6m (ATO, RM) | | |
| Chip Type | 1/2.7 CMOS | | |

| | | |
|----------|----|---------------|
| Draft | | UNIT: MM |
| Change | | Scale: 1:1 |
| DRV BY | du | Computer: III |
| CHECK BY | | File NO: |
| | | Version: V1.0 |